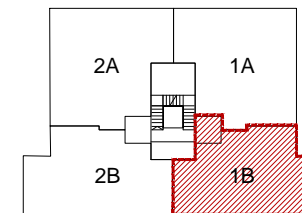
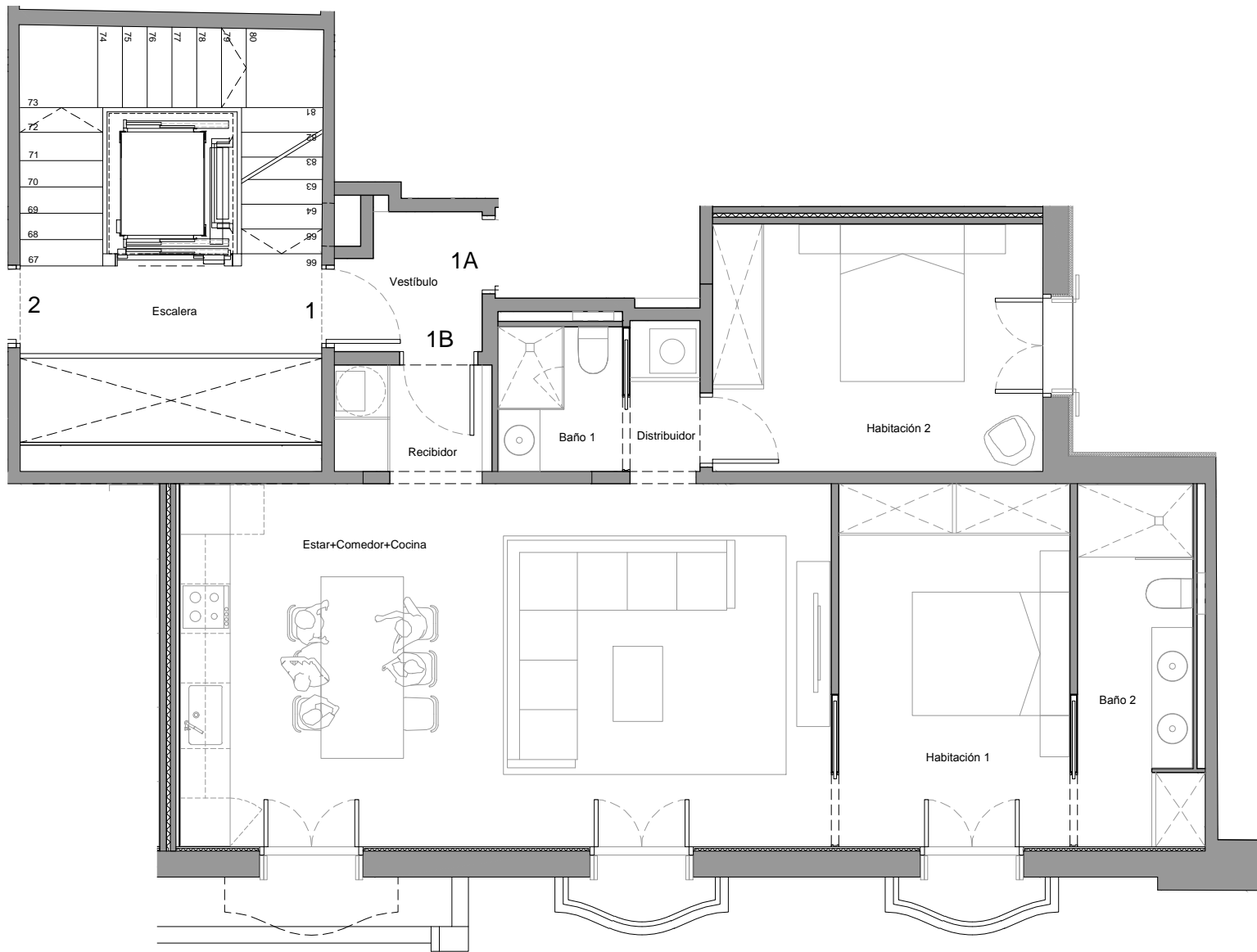


P_1-B

PLANTA PRINCIPAL. PUERTA 1-B



TOTAL SUP. CONSTRUIDA:	89,33 m ²
SUP. CONST TRASTERO N° 9:	3,39 m ²
TOTAL SUP. CONSTRUIDA:	92,72 m ²
SUP. ESPACIO COMÚN:	10,92 m ²

VIVIENDA PLANTA PRINCIPAL - PUERTA 1-B. 