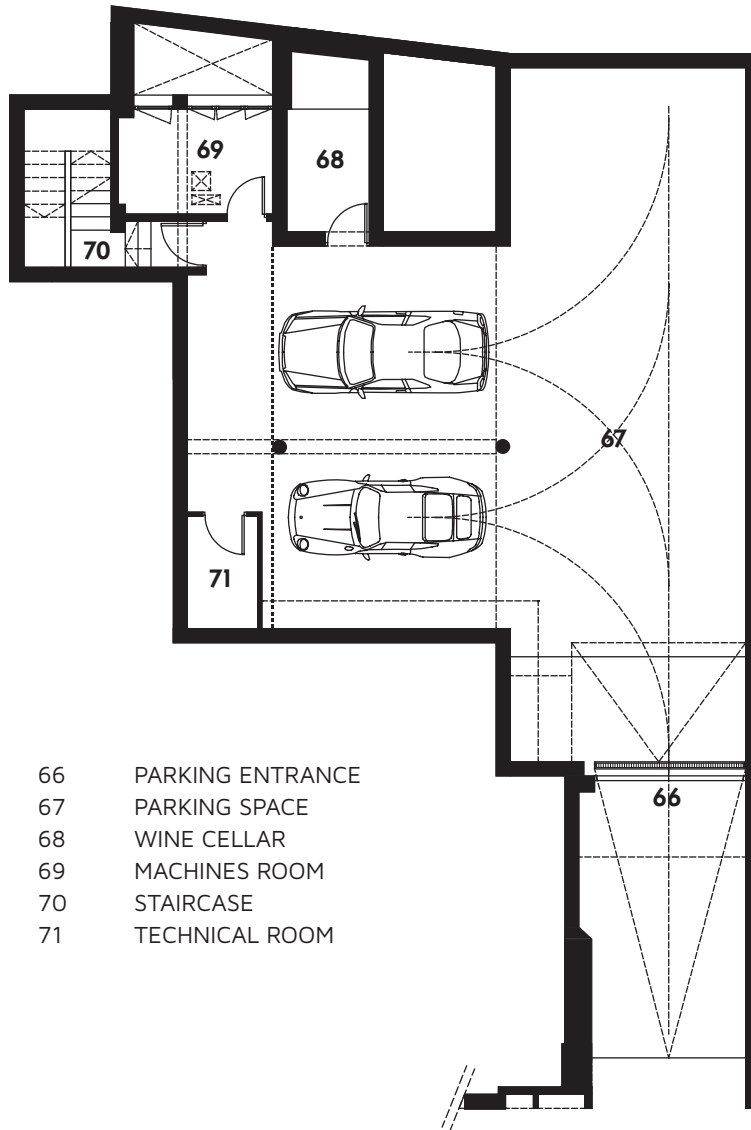
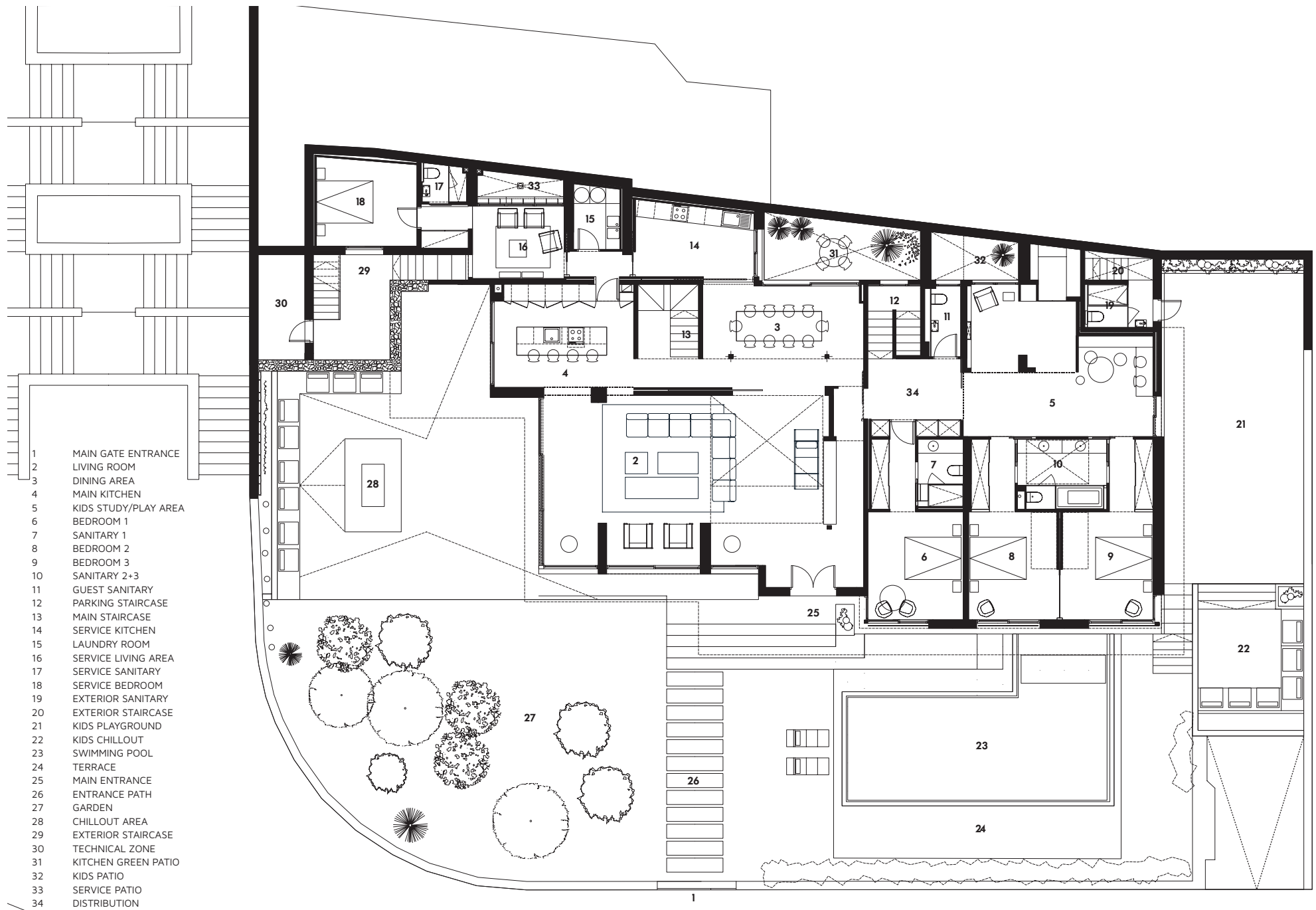


PLANS

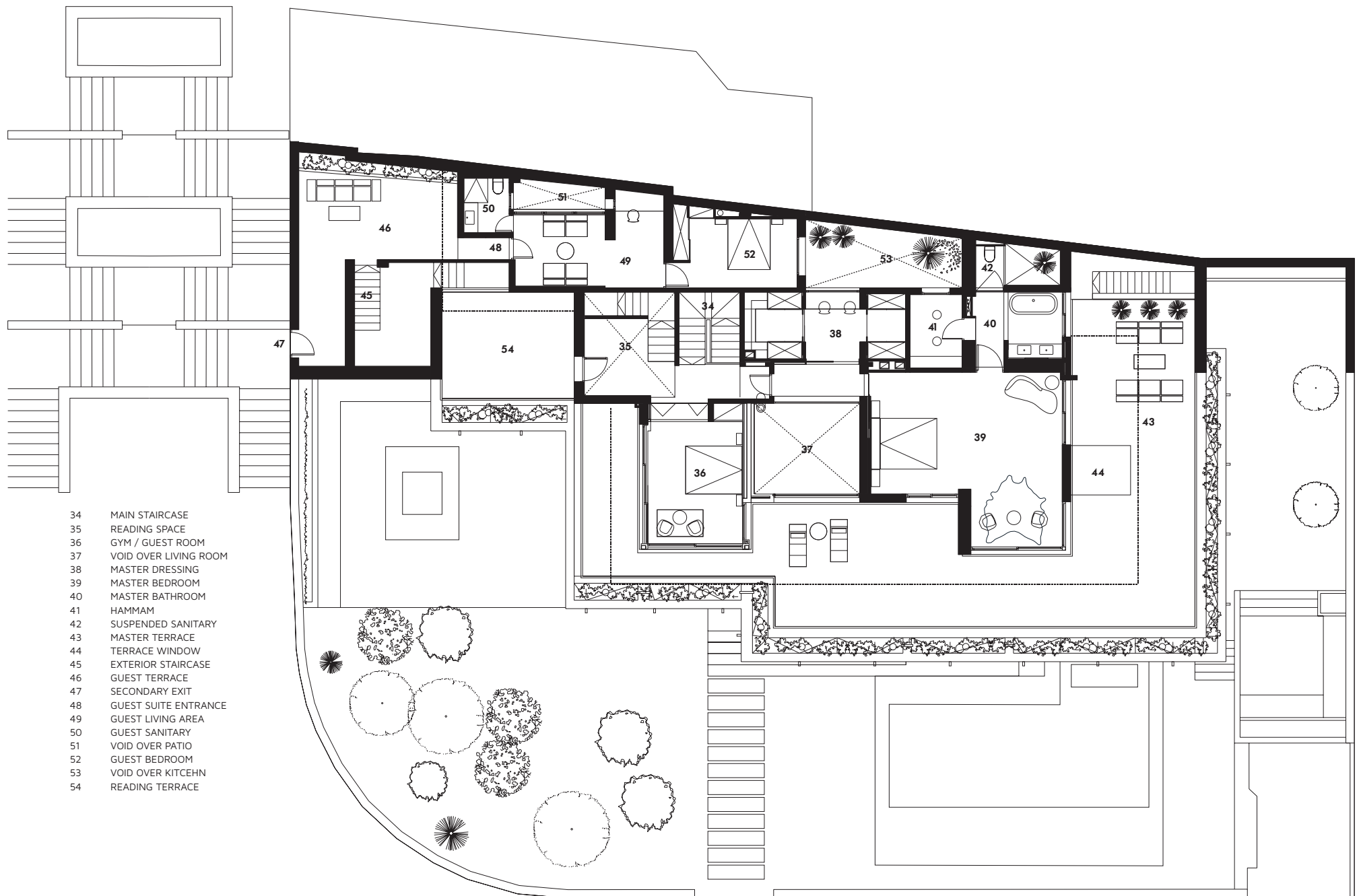


- 66 PARKING ENTRANCE
- 67 PARKING SPACE
- 68 WINE CELLAR
- 69 MACHINES ROOM
- 70 STAIRCASE
- 71 TECHNICAL ROOM

PARKING FLOOR

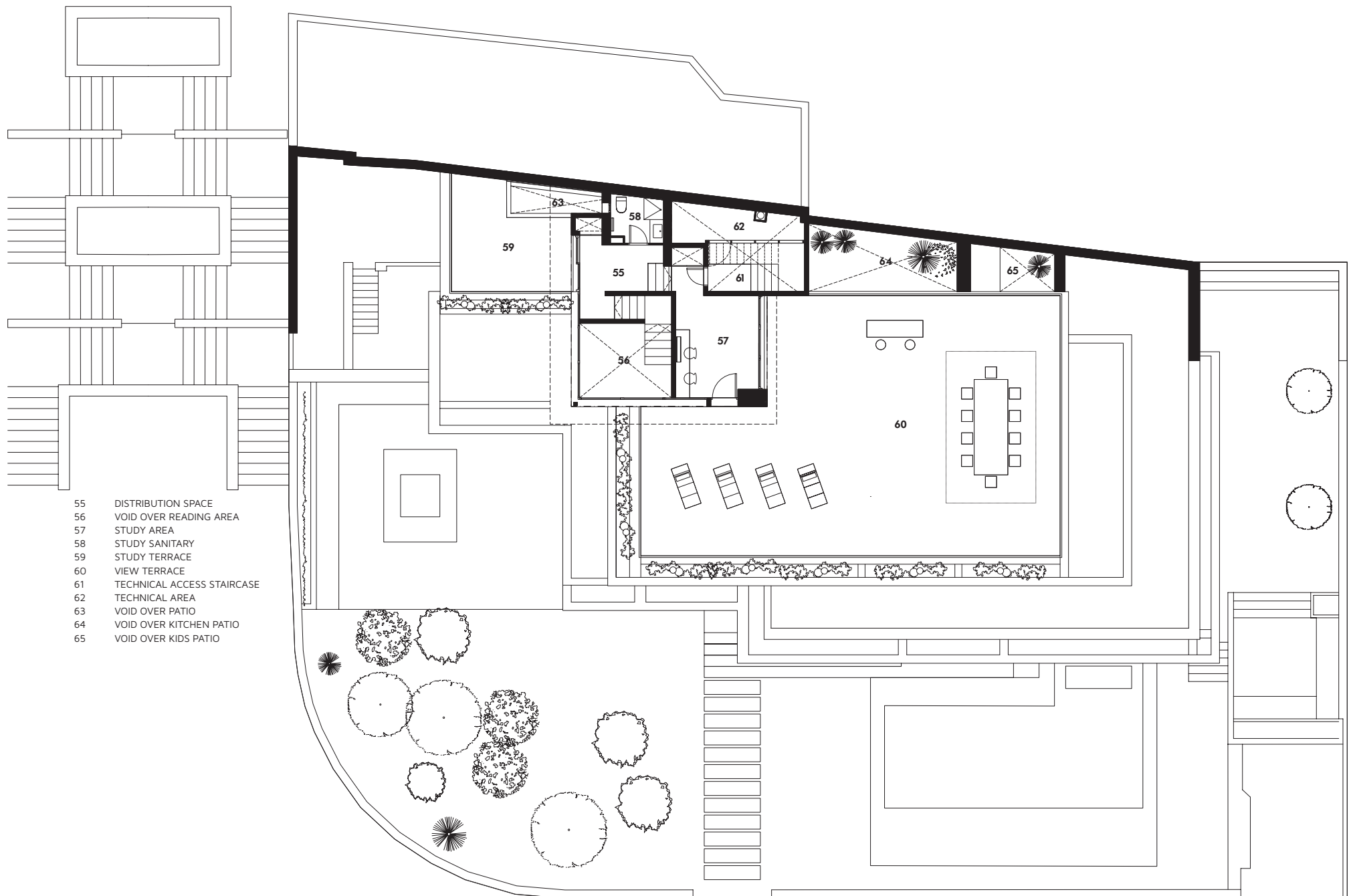


GROUND FLOOR

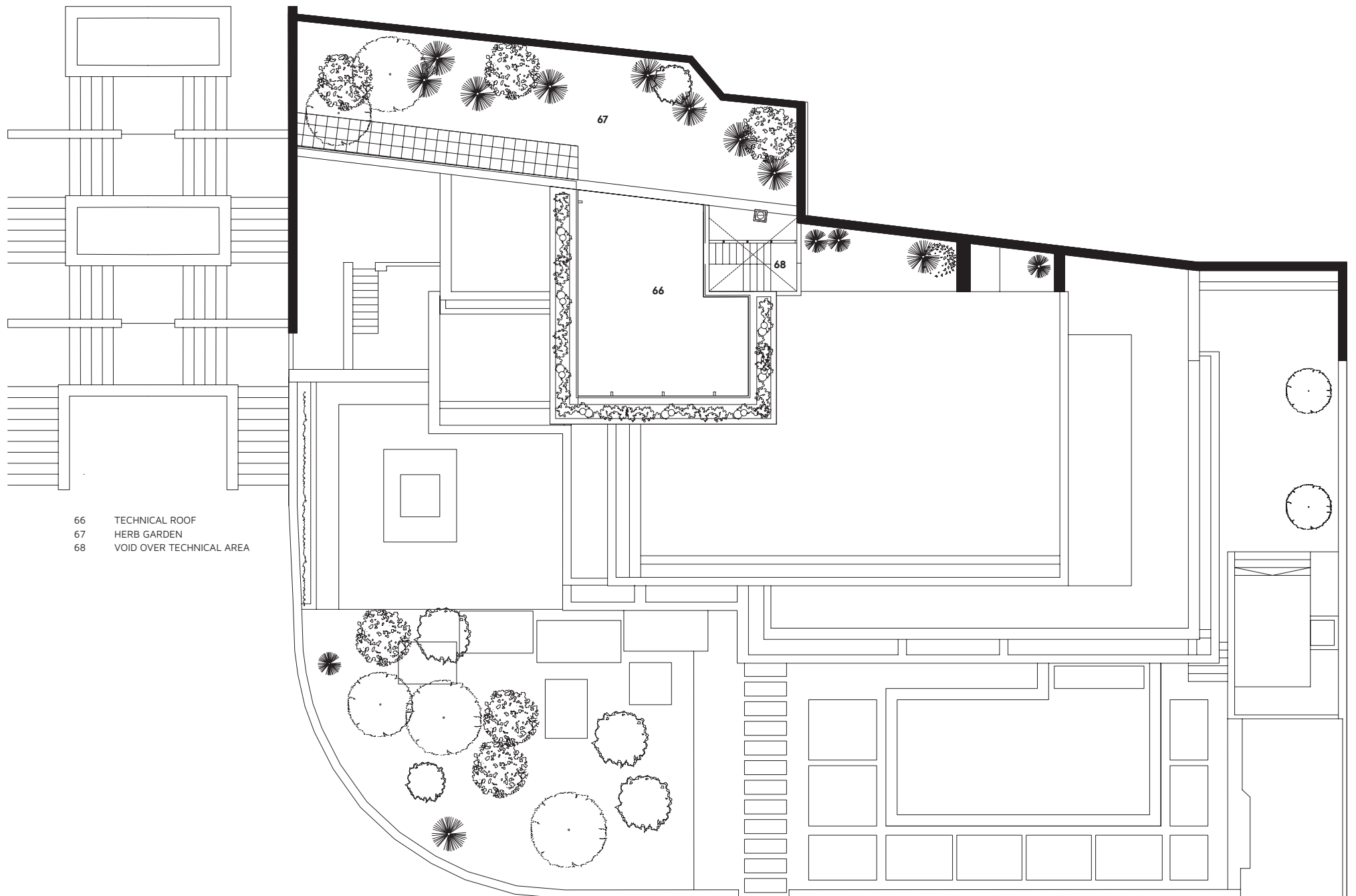


- 34 MAIN STAIRCASE
- 35 READING SPACE
- 36 GYM / GUEST ROOM
- 37 VOID OVER LIVING ROOM
- 38 MASTER DRESSING
- 39 MASTER BEDROOM
- 40 MASTER BATHROOM
- 41 HAMMAM
- 42 SUSPENDED SANITARY
- 43 MASTER TERRACE
- 44 TERRACE WINDOW
- 45 EXTERIOR STAIRCASE
- 46 GUEST TERRACE
- 47 SECONDARY EXIT
- 48 GUEST SUITE ENTRANCE
- 49 GUEST LIVING AREA
- 50 GUEST SANITARY
- 51 VOID OVER PATIO
- 52 GUEST BEDROOM
- 53 VOID OVER KITCEHN
- 54 READING TERRACE

FIRST FLOOR



SECOND FLOOR



- 66 TECHNICAL ROOF
- 67 HERB GARDEN
- 68 VOID OVER TECHNICAL AREA

THIRD FLOOR