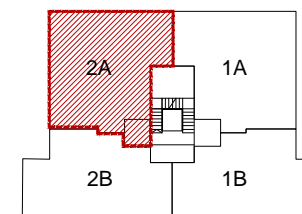

PLANOS

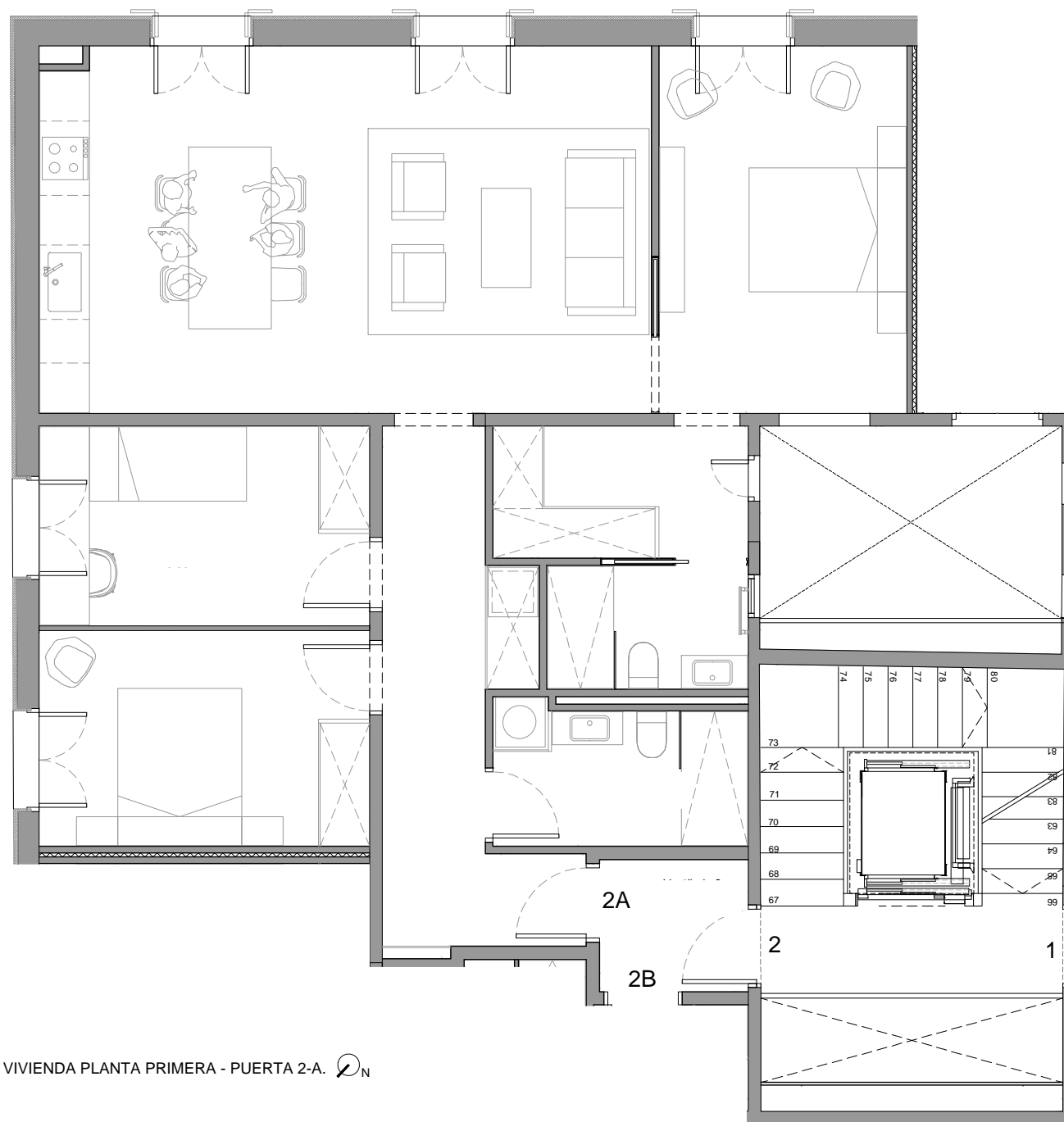
FLOOR PLANS

1_2-A

PLANTA PRIMERA. PUERTA 2-A



| | |
|----------------------------|-----------------------|
| TOTAL SUP. CONSTRUIDA: | 105,39 m ² |
| SUP. CONST. TRASTERO N° 2: | 3,09 m ² |
| TOTAL SUP. CONSTRUIDA: | 108,48 m ² |
| SUP. ESPACIO COMÚN: | 12,77 m ² |



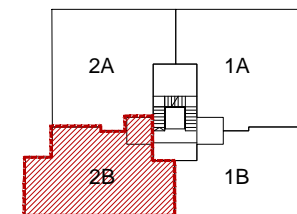
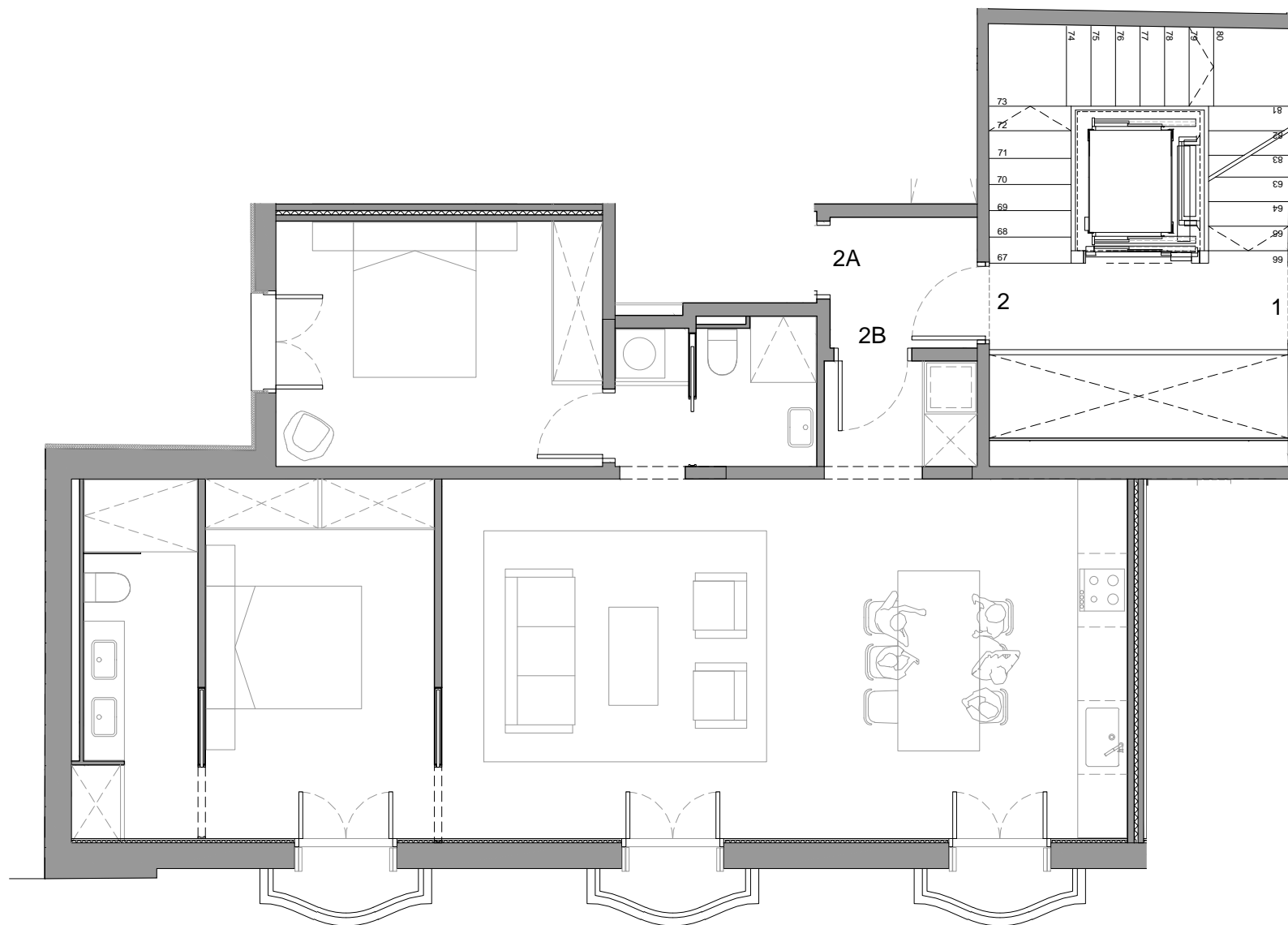
VIVIENDA PLANTA PRIMERA - PUERTA 2-A. 

PLATÓ
20
NuvoBarcelona

Plató 20

1_2-B

PLANTA PRIMERA. PUERTA 2-B



| | |
|---------------------------|----------------------|
| TOTAL SUP. CONSTRUIDA: | 92,70 m ² |
| SUP. CONST TRASTERO N° 3: | 3,09 m ² |
| TOTAL SUP. CONSTRUIDA: | 95,79 m ² |
| SUP. ESPACIO COMÚN: | 11,28 m ² |

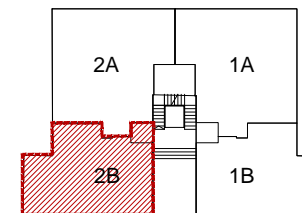
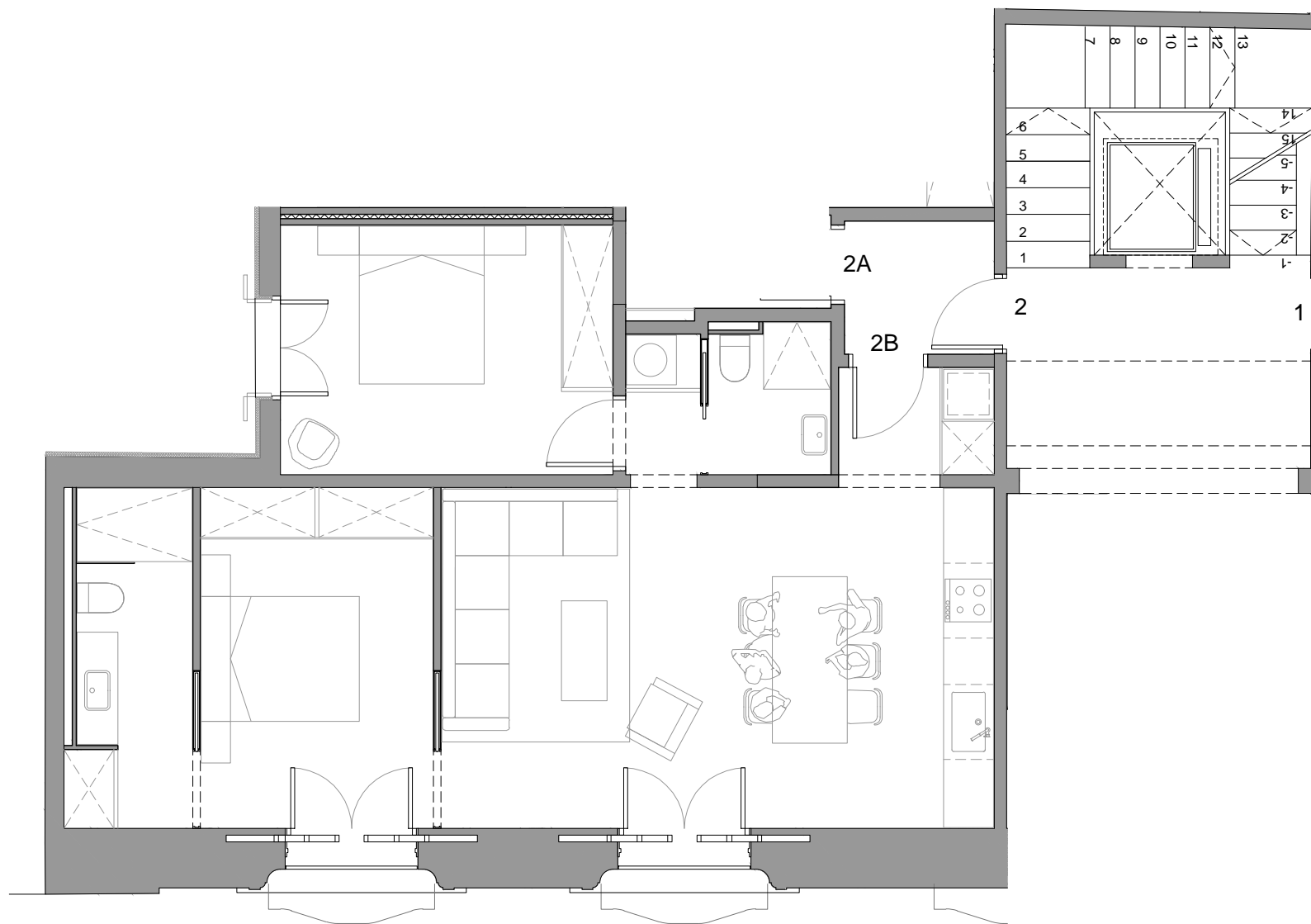
VIVIENDA PLANTA PRIMERA - PUERTA 2-B. 

PLATÓ
20
NuvoBarcelona

Plató 20

B_2-B

PLANTA BAJA. PUERTA 2-B



| | |
|----------------------------|----------------------|
| TOTAL SUP. CONSTRUIDA: | 80,76 m ² |
| SUP. CONST TRASTERO N° 19: | 4,83 m ² |
| TOTAL SUP. CONSTRUIDA: | 85,59 m ² |
| SUP. ESPACIO COMÚN: | 10,08 m ² |

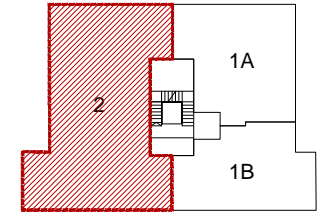
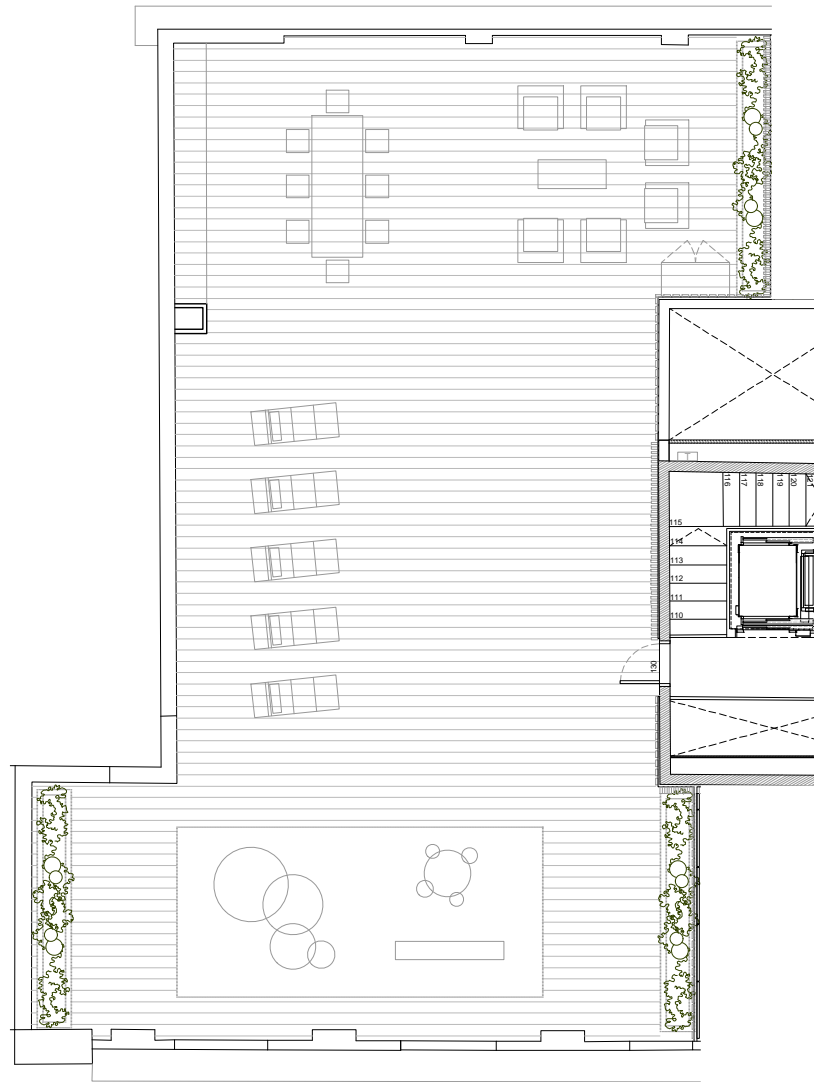
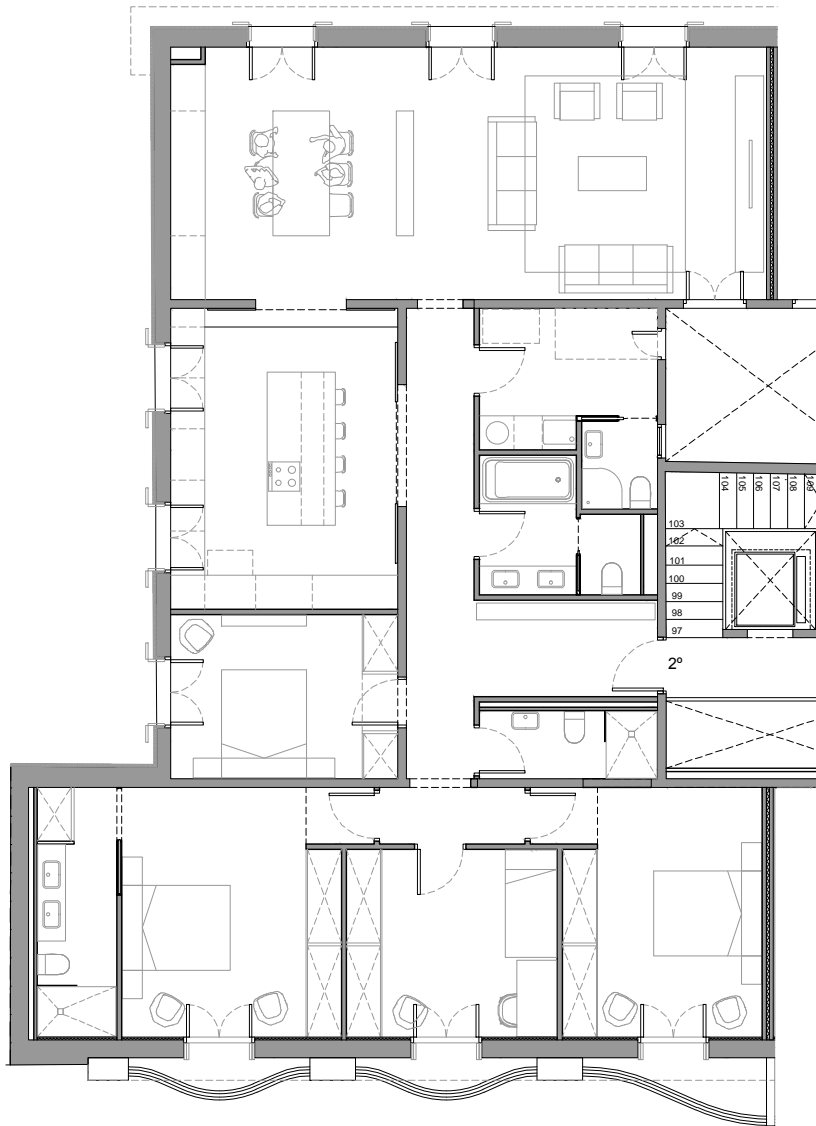
VIVIENDA PLANTA BAJA - PUERTA 2-B. 

PLATÓ

20

NuvoBarcelona

Plató 20



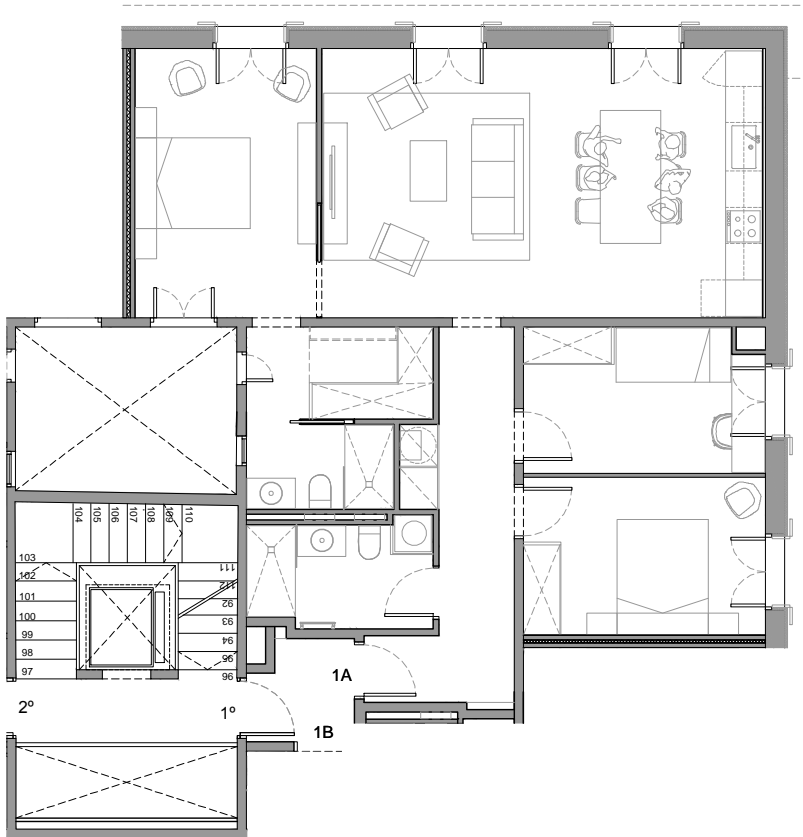
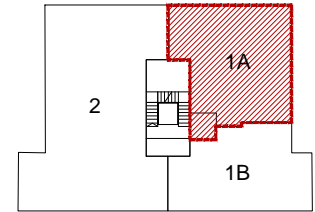
| | |
|----------------------------|-----------------------|
| TOTAL SUP. CONSTRUIDA: | 198,25 m ² |
| SUP. CONST TRASTERO N° 23: | 2,18 m ² |
| TOTAL SUP. CONSTRUIDA: | 200,43 m ² |
| SUP. TERRAZA: | 185,12 m ² |
| SUP. ESPACIO COMÚN: | 23,60 m ² |

VIVIENDA PLANTA CUARTA - PUERTA 2. 

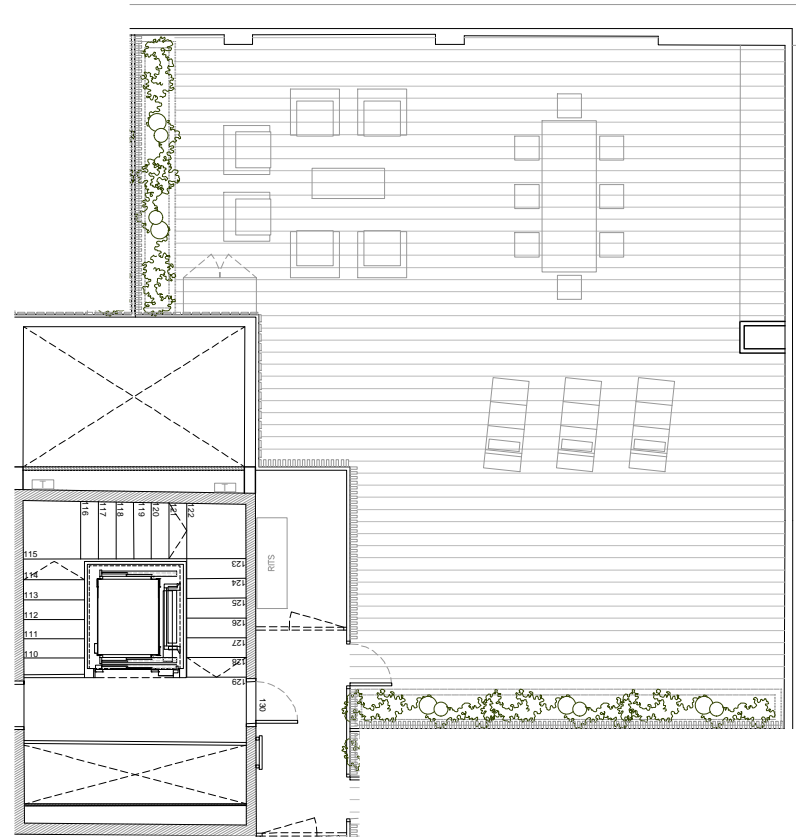
TERRAZA PLANTA CUARTA - PUERTA 2. 

4_1-A

PLANTA CUARTA. PUERTA 1-A



VIVIENDA PLANTA CUARTA - PUERTA 1-A.

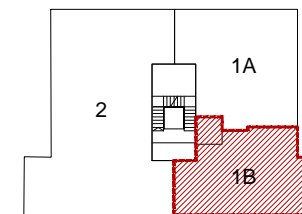


TERRAZA PLANTA CUARTA - PUERTA 1-A.

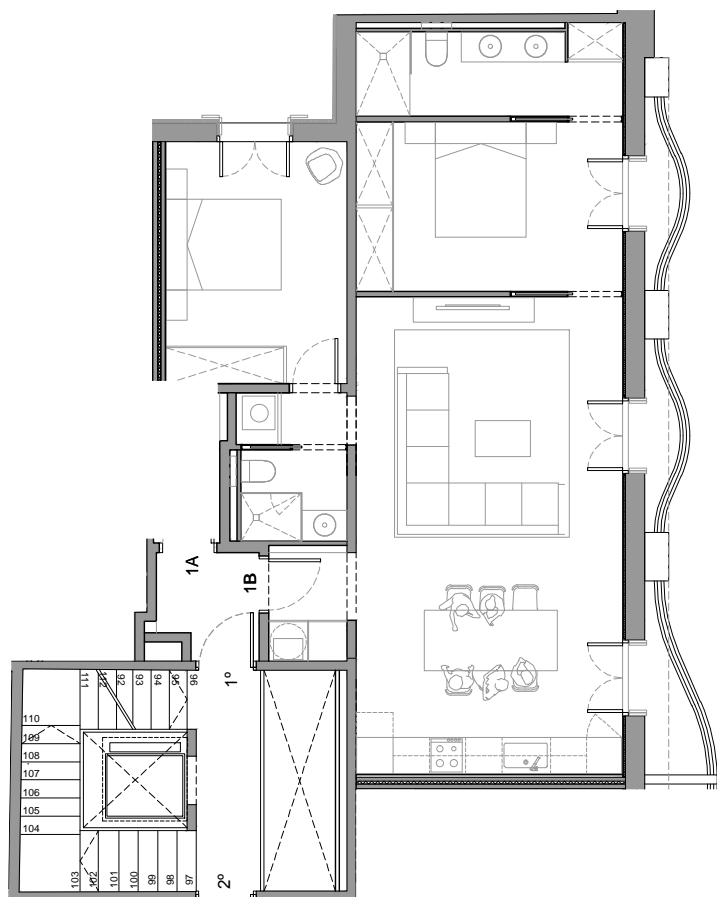
| | |
|----------------------------|-----------------------|
| TOTAL SUP. CONSTRUIDA: | 105,39 m ² |
| SUP. CONST TRASTERO N° 22: | 2,18 m ² |
| TOTAL SUP. CONSTRUIDA: | 107,57 m ² |
| SUP. TERRAZA: | 106,06 m ² |
| SUP. ESPACIO COMÚN: | 12,67 m ² |

4_1-B

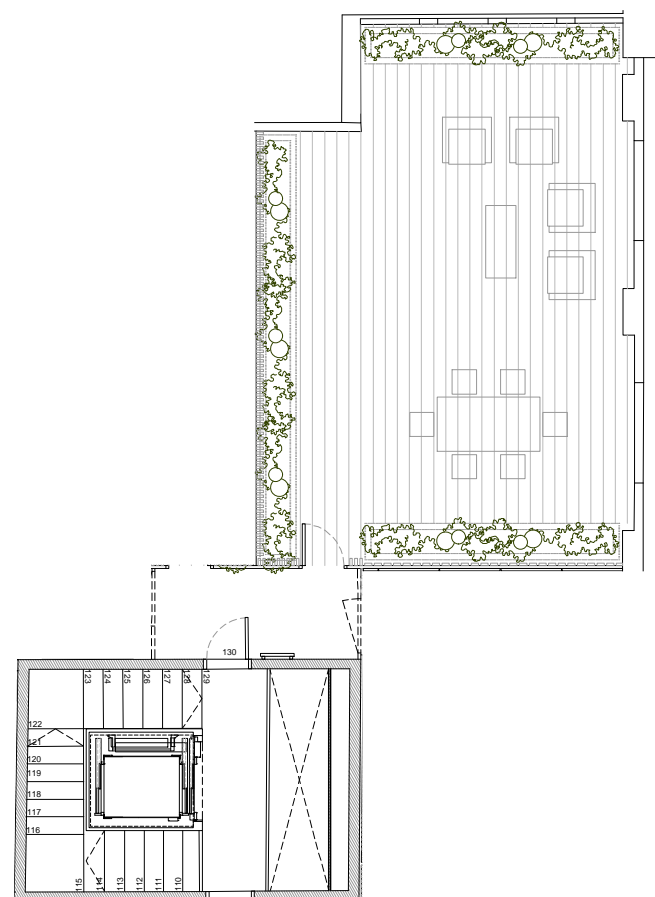
PLANTA CUARTA. PUERTA 1-B




| | |
|----------------------------|----------------------|
| TOTAL SUP. CONSTRUIDA: | 90,54 m ² |
| SUP. CONST TRASTERO N° 12: | 2,63 m ² |
| TOTAL SUP. CONSTRUIDA: | 93,17 m ² |
| SUP. TERRAZA: | 56,35 m ² |
| SUP. ESPACIO COMÚN: | 10,97 m ² |



VIVIENDA PLANTA CUARTA - PUERTA 1-B. 



TERRAZA PLANTA CUARTA - PUERTA 1-B. 

PLATÓ
20
NuvoBarcelona